

AC40-2L

40 Tonne

ALL TERRAIN CRANE





Counterweight



Lifting capacities on outriggers



Radius



Main boom



Folding swing-away jib



Runner



Max. axle loads



Tires



Hook block



Hoist



free on wheels



Travel speed



Gradeability – road



Gradeability – off road



Slewing



Boom telescoping



Boom elevation



Working speeds



Max. line pull · Max



Rope diameter



Rope length



Hook block (capacity-sheaves-rope diameter)



Number of lines



Possible load of hook block



Weight of hook block



Distance head sheave axle – hook ground



Number of sheaves in boom head



Supporting force

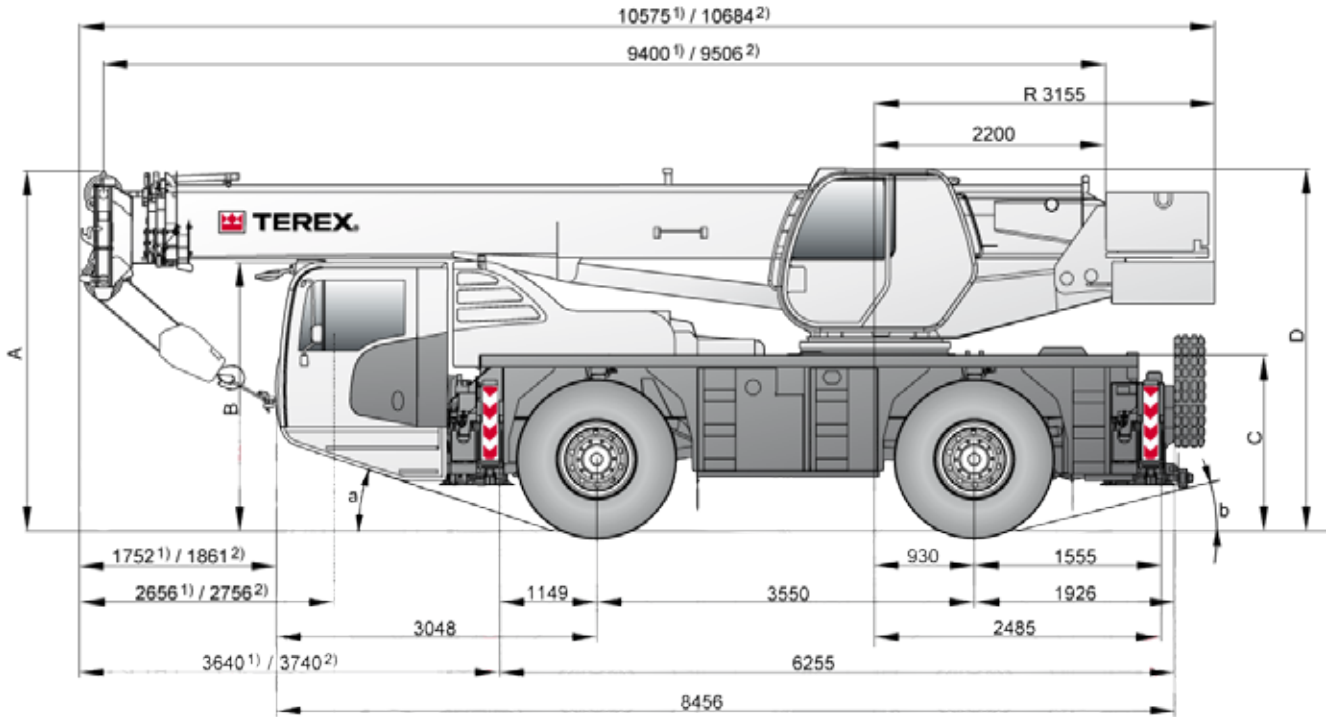



Length of stroke (support cylinders)

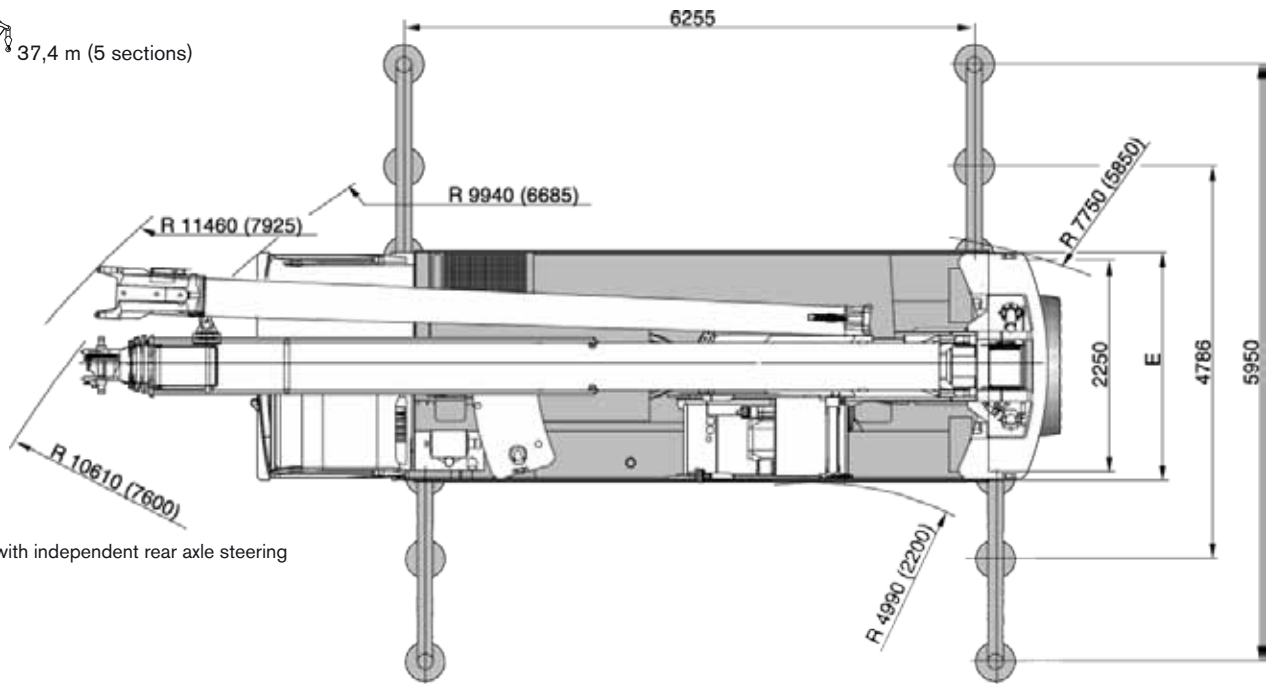


Eddy current brake


DIMENSIONS



2)  37,4 m (5 sections)



() with independent rear axle steering

	A*	B*	C*	D*	E	a	b
20.5 x 25	3400	2525	1630	3400	2850	13°	13°

* Suspension lowered to 80 mm

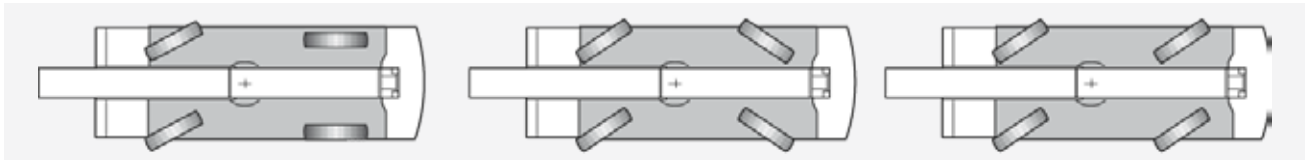


SPECIFICATIONS



AC 40-2 L

2 x 13 - A	16.00R25	15 t	8 m	X	3,0 t
2 x 13 - B	16.00R25	15 t	-	X	3,6 t
2 x 15	16.00R25	40 t	8 m	X	5,5 t



26 t	32 t	80 km/h ¹⁾
	550 mm	550 mm

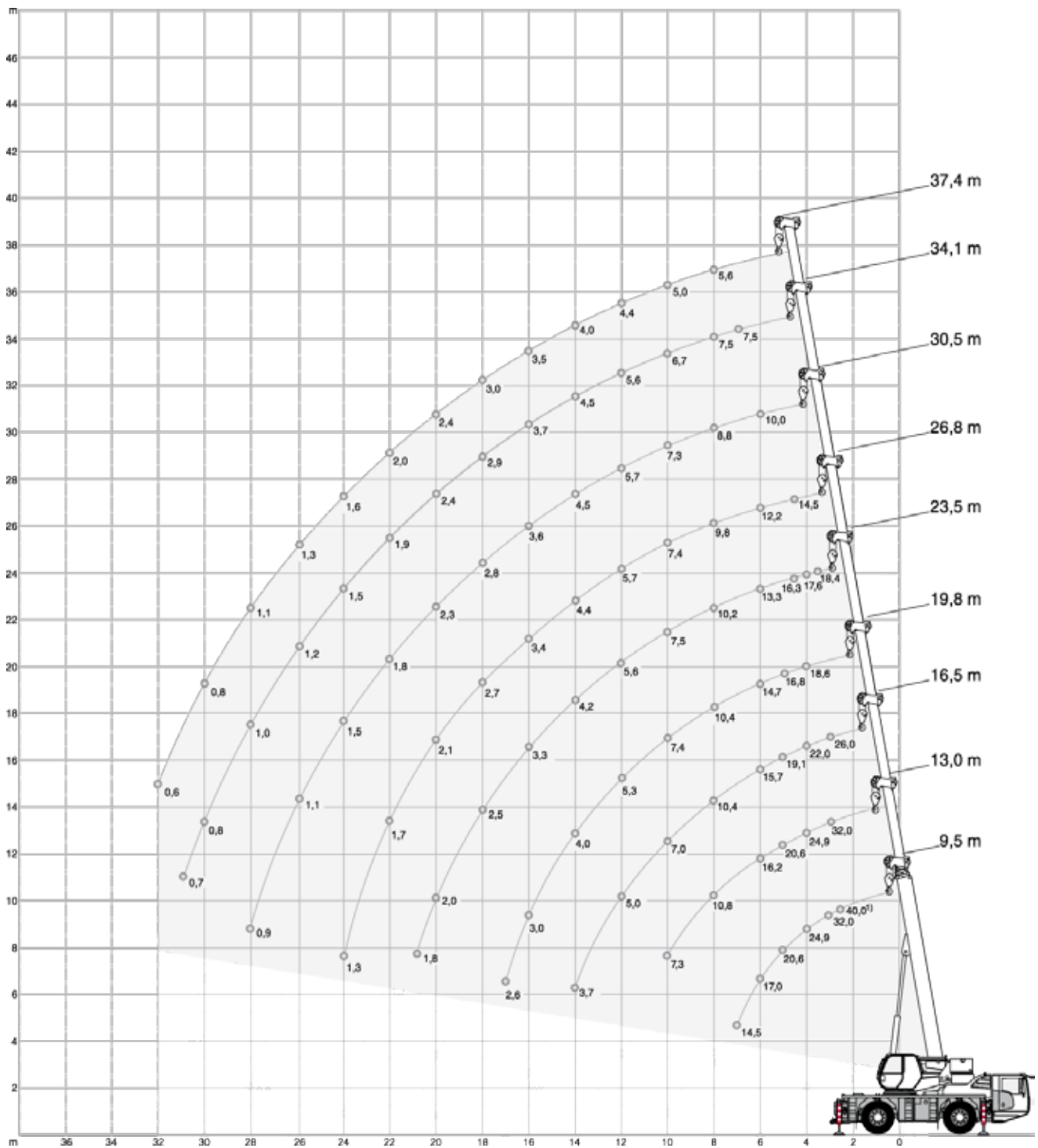
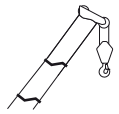
¹⁾ Depending on tire type, size and country specific legislation

	445/95 R25 16.00 R 25
	58 % (5 sections)
	58 % (5 sections)

1	115 m ³ /min	45,0 kN	16 mm	160 m
	2,2 min ⁻¹			
	90 s (9.5-37.4 m)			
	36 s (-4° - 80°)			




1	4,5	5-0-16	4 / 5	82	1,00 m
3	13,5	15-1-16	4 / 5	170	1,50 m
5	22,5	22,5-2-16	4 / 5	215	1,80 m
7	25,0	25-3-16	4 / 5	330	1,80 m
7	31,5	32-3-16	4 / 5	340	1,80 m
8	36,0	40-4-16	4	385	1,80 m
9	40,0	40-4-16	5	385	1,80 m

HA



¹⁾ over rear · nach hinten · sur l'arrière · sul retro · hacia atrás · para trás · сзади


HA


5,5 t		6,20 x 5,95 m									360°	ISO
		9,50	13,00	16,50	19,80	23,50	26,80	30,50	34,10	37,40		
m	t	t	t	t	t	t	t	t	t	t	m	
2,6	40,00 ¹⁾	-	-	-	-	-	-	-	-	-	2,6	
3,0	35,00 ¹⁾	-	-	-	-	-	-	-	-	-	3,0	
3,0	32,00	32,00	25,95	18,95	-	-	-	-	-	-	3,0	
3,5	27,45	27,45	23,70	18,35	18,40	-	-	-	-	-	3,5	
4,0	24,90	24,90	22,00	18,60	17,55	-	-	-	-	-	4,0	
4,5	22,60	22,60	20,45	17,95	16,25	14,45	-	-	-	-	4,5	
5,0	20,60	20,60	19,05	16,75	15,15	13,85	-	-	-	-	5,0	
6,0	17,00	17,85	17,25	14,70	13,30	12,20	10,00	-	-	-	6,0	
7,0	14,45	14,95	14,60	12,75	11,80	10,90	9,65	7,45	-	-	7,0	
8,0	-	11,85	12,15	11,65	10,20	9,75	8,80	7,45	5,55	-	8,0	
9,0	-	9,75	10,00	10,10	8,70	8,55	8,00	7,05	5,35	-	9,0	
10,0	-	8,15	8,40	8,55	7,50	7,40	7,30	6,70	5,00	-	10,0	
11,0	-	-	7,20	7,35	6,95	6,50	6,40	6,15	4,65	-	11,0	
12,0	-	-	6,25	6,40	6,50	5,70	5,70	5,60	4,40	-	12,0	
13,0	-	-	5,45	5,60	5,70	5,25	5,05	5,00	4,15	-	13,0	
14,0	-	-	4,85	4,95	5,05	4,95	4,50	4,50	3,95	-	14,0	
15,0	-	-	-	4,40	4,50	4,60	4,00	4,05	3,70	-	15,0	
16,0	-	-	-	3,95	4,05	4,10	3,55	3,65	3,45	-	16,0	
17,0	-	-	-	3,55	3,65	3,70	3,15	3,25	3,25	-	17,0	
18,0	-	-	-	-	3,30	3,35	2,80	2,90	3,00	-	18,0	
19,0	-	-	-	-	3,00	3,05	2,50	2,60	2,70	-	19,0	
20,0	-	-	-	-	2,75	2,80	2,25	2,35	2,40	-	20,0	
21,0	-	-	-	-	2,50	2,55	2,00	2,25	2,15	-	21,0	
22,0	-	-	-	-	-	2,35	1,80	2,10	1,95	-	22,0	
23,0	-	-	-	-	-	2,15	1,60	1,95	1,75	-	23,0	
24,0	-	-	-	-	-	1,95	1,45	1,75	1,60	-	24,0	
25,0	-	-	-	-	-	-	1,35	1,60	1,45	-	25,0	
26,0	-	-	-	-	-	-	1,25	1,45	1,30	-	26,0	
27,0	-	-	-	-	-	-	1,15	1,35	1,15	-	27,0	
28,0	-	-	-	-	-	-	1,05	1,20	1,05	-	28,0	
29,0	-	-	-	-	-	-	-	1,10	0,90	-	29,0	
30,0	-	-	-	-	-	-	-	1,00	0,80	-	30,0	
31,0	-	-	-	-	-	-	-	0,90	0,70	-	31,0	
32,0	-	-	-	-	-	-	-	-	0,60	-	32,0	
33,0	-	-	-	-	-	-	-	-	0,55	-	33,0	

¹⁾ over rear · nach hinten · sur l'arrière · sul retro · hacia atrás · para trás · сзади

Lengths may vary depending on various telescoping sequences




HA

5,5 t		6,20 x 4,80 m									360°	ISO
												
m	9,50	13,00	16,50	19,80	23,50	26,80	30,50	34,10	37,40	m		
t	t	t	t	t	t	t	t	t	t	t		
3,0	30,45	30,05	25,95	18,95	-	-	-	-	-	3,0		
3,5	27,10	26,75	23,70	18,35	18,40	-	-	-	-	3,5		
4,0	24,35	23,95	22,00	18,60	17,55	-	-	-	-	4,0		
4,5	22,05	21,65	19,65	17,95	16,25	14,45	-	-	-	4,5		
5,0	20,05	20,00	18,70	15,95	15,15	13,85	-	-	-	5,0		
6,0	15,40	15,25	14,55	13,90	11,95	11,55	10,00	-	-	6,0		
7,0	11,55	12,05	11,75	11,30	9,70	9,45	9,20	7,45	-	7,0		
8,0	-	9,55	9,75	9,50	8,75	7,90	7,75	7,45	5,55	8,0		
9,0	-	7,80	8,05	8,10	7,85	6,90	6,60	6,45	5,35	9,0		
10,0	-	6,50	6,75	6,90	6,85	6,40	5,70	5,60	5,00	10,0		
11,0	-	-	5,75	5,85	6,00	5,90	4,95	4,90	4,65	11,0		
12,0	-	-	4,95	5,05	5,20	5,20	4,35	4,30	4,30	12,0		
13,0	-	-	4,30	4,45	4,55	4,60	3,85	3,85	3,80	13,0		
14,0	-	-	3,75	3,90	4,00	4,05	3,40	3,60	3,40	14,0		
15,0	-	-	-	3,45	3,55	3,60	3,00	3,35	3,00	15,0		
16,0	-	-	-	3,05	3,15	3,20	2,70	3,00	2,70	16,0		
17,0	-	-	-	2,70	2,80	2,90	2,45	2,70	2,45	17,0		
18,0	-	-	-	-	2,50	2,60	2,30	2,40	2,20	18,0		
19,0	-	-	-	-	2,25	2,35	2,10	2,15	1,95	19,0		
20,0	-	-	-	-	2,05	2,10	1,95	1,90	1,70	20,0		
21,0	-	-	-	-	1,85	1,90	1,80	1,70	1,50	21,0		
22,0	-	-	-	-	-	1,70	1,70	1,50	1,35	22,0		
23,0	-	-	-	-	-	1,55	1,55	1,35	1,20	23,0		
24,0	-	-	-	-	-	1,40	1,45	1,20	1,05	24,0		
25,0	-	-	-	-	-	-	1,30	1,10	0,90	25,0		
26,0	-	-	-	-	-	-	1,20	0,95	0,80	26,0		
27,0	-	-	-	-	-	-	1,05	0,85	0,65	27,0		
28,0	-	-	-	-	-	-	0,95	0,75	0,55	28,0		
29,0	-	-	-	-	-	-	-	0,65	-	29,0		
30,0	-	-	-	-	-	-	-	0,55	-	30,0		

5,5 t		6,20 x 2,25 m							360°	ISO
										
m	9,50	13,00	16,50	19,80	23,50	26,80	30,50	m		
t	t	t	t	t	t	t	t	t		
3,0	14,40	13,45	12,50	11,70	-	-	-	3,0		
3,5	11,85	11,20	10,60	10,00	9,40	-	-	3,5		
4,0	9,95	9,55	9,10	8,65	8,20	-	-	4,0		
4,5	8,50	8,25	7,95	7,60	7,25	6,95	-	4,5		
5,0	7,40	7,20	7,00	6,75	6,45	6,20	-	5,0		
6,0	5,45	5,65	5,55	5,40	5,20	5,05	4,85	6,0		
7,0	4,15	4,55	4,50	4,40	4,30	4,20	4,05	7,0		
8,0	-	3,60	3,70	3,65	3,60	3,50	3,40	8,0		
9,0	-	2,90	3,10	3,10	3,05	3,00	2,90	9,0		
10,0	-	2,35	2,55	2,60	2,60	2,55	2,50	10,0		
11,0	-	-	2,10	2,20	2,20	2,20	2,15	11,0		
12,0	-	-	1,75	1,85	1,90	1,85	1,85	12,0		
13,0	-	-	1,40	1,55	1,60	1,60	1,60	13,0		
14,0	-	-	1,15	1,30	1,35	1,40	1,35	14,0		
15,0	-	-	-	1,05	1,15	1,20	1,15	15,0		
16,0	-	-	-	0,85	0,95	1,00	1,00	16,0		
17,0	-	-	-	0,70	0,80	0,85	0,85	17,0		
18,0	-	-	-	-	0,65	0,70	0,70	18,0		
19,0	-	-	-	-	-	-	0,60	19,0		

Lengths may vary depending on various telescoping sequences




HA

3,8 t		6,20 x 5,95 m										360°	ISO
													
(m) 9,50 ¹⁾		9,50	13,00	16,50	19,80	23,50	26,80	30,50	34,10	37,40			
m	t	t	t	t	t	t	t	t	t	t	t	m	
3	35,00	32,00	31,20	25,95	18,95	-	-	-	-	-	-	3	
3,5	27,45	27,45	27,45	23,70	18,35	18,40	-	-	-	-	-	3,5	
4	24,55	24,55	24,45	22,00	18,60	17,55	-	-	-	-	-	4	
4,5	22,00	22,00	22,00	20,45	17,95	16,25	14,45	-	-	-	-	4,5	
5	19,95	19,95	19,95	18,75	16,75	15,15	13,85	-	-	-	-	5	
6	16,15	16,15	16,15	16,15	14,00	13,30	12,20	10,00	-	-	-	6	
7	12,85	12,85	13,00	13,00	12,60	10,85	10,60	9,65	7,45	-	-	7	
8	-	-	10,40	10,40	10,40	9,05	8,85	8,65	7,45	5,55	-	8	
9	-	-	8,55	8,55	8,55	8,05	7,55	7,40	7,05	5,35	-	9	
10	-	-	7,15	7,15	7,15	7,15	6,50	6,40	6,30	5,00	-	10	
11	-	-	-	5,95	5,95	5,95	5,95	5,60	5,55	4,65	-	11	
12	-	-	-	5,30	5,30	5,30	5,30	4,95	4,90	4,40	-	12	
13	-	-	-	4,50	4,50	4,50	4,50	4,35	4,35	4,15	-	13	
14	-	-	-	3,90	3,90	3,90	3,90	3,90	3,90	3,85	-	14	
15	-	-	-	-	3,35	3,35	3,35	3,35	3,35	3,35	-	15	
16	-	-	-	-	3,05	3,05	3,05	3,00	3,05	3,05	-	16	
17	-	-	-	-	2,60	2,60	2,60	2,60	2,60	2,60	-	17	
18	-	-	-	-	-	2,30	2,30	2,30	2,30	2,30	-	18	
19	-	-	-	-	-	2,10	2,10	2,10	2,10	2,10	-	19	
20	-	-	-	-	-	2,00	2,00	1,95	2,00	2,00	-	20	
21	-	-	-	-	-	1,75	1,75	1,75	1,75	1,75	-	21	
22	-	-	-	-	-	-	1,55	1,55	1,55	1,55	-	22	
23	-	-	-	-	-	-	1,35	1,35	1,35	1,35	-	23	
24	-	-	-	-	-	-	1,25	1,25	1,25	1,25	-	24	
25	-	-	-	-	-	-	-	1,10	1,10	1,10	-	25	
26	-	-	-	-	-	-	-	1,00	1,00	1,00	-	26	
27	-	-	-	-	-	-	-	0,95	0,95	0,85	-	27	
28	-	-	-	-	-	-	-	0,90	0,90	0,75	-	28	
29	-	-	-	-	-	-	-	-	0,80	0,65	-	29	
30	-	-	-	-	-	-	-	-	0,75	-	-	30	
31	-	-	-	-	-	-	-	-	0,65	-	-	31	

¹⁾ over rear · nach hinten · sur l'arrière · sul retro · hacia atrás · para trás · сзади




Lengths may vary depending on various telescoping sequences




HA

		3,8 t		6,20 m x 4,80 m		360°		0° / 360°		ISO						
																
		(m)														
		9,50	13,00	16,50	19,80	23,50	26,80	30,50	34,10	37,40	9,50	13,00	16,50	9,50*	13,00*	
m	t	t	t	t	t	t	t	t	t	t	t	t	t	t	t	m
3	28,90	28,90	25,95	18,95	-	-	-	-	-	-	9,95	10,75	11,25	6,60	7,45	3
3,5	25,65	25,65	23,70	18,35	18,40	-	-	-	-	-	8,85	9,55	10,00	5,55	6,25	3,5
4	22,95	22,95	20,40	18,60	17,55	-	-	-	-	-	7,90	8,55	8,95	4,70	5,35	4
4,5	20,75	20,70	19,25	16,40	15,30	14,45	-	-	-	-	7,10	7,70	8,05	4,00	4,60	4,5
5	18,85	17,60	16,55	15,45	13,30	12,70	-	-	-	-	6,10	6,65	7,00	3,45	4,00	5
6	13,45	13,40	12,75	12,20	10,45	10,05	9,70	-	-	-	4,35	4,90	5,15	2,55	3,05	6
7	10,05	10,55	10,30	9,90	9,55	8,15	7,95	7,45	-	-	3,20	3,70	3,95	1,90	2,35	7
8	-	8,30	8,50	8,25	8,00	7,45	6,65	6,50	5,55	-	-	2,85	3,10	-	1,80	8
9	-	6,75	7,00	7,00	6,85	6,65	5,65	5,55	5,35	-	-	2,20	2,45	-	1,40	9
10	-	5,60	5,80	5,95	5,90	5,80	4,85	4,80	4,70	-	-	1,70	1,95	-	1,05	10
11	-	-	4,95	5,05	5,15	5,05	4,20	4,45	4,10	-	-	-	1,50	-	-	11
12	-	-	4,20	4,35	4,45	4,50	3,75	3,95	3,60	-	-	-	1,20	-	-	12
13	-	-	3,65	3,75	3,85	3,95	3,45	3,50	3,15	-	-	-	-	-	-	13
14	-	-	3,15	3,30	3,40	3,45	3,15	3,10	2,80	-	-	-	-	-	-	14
15	-	-	-	2,90	3,00	3,05	2,90	2,75	2,45	-	-	-	-	-	-	15
16	-	-	-	2,55	2,65	2,70	2,70	2,45	2,20	-	-	-	-	-	-	16
17	-	-	-	2,25	2,35	2,40	2,45	2,20	1,95	-	-	-	-	-	-	17
18	-	-	-	-	2,10	2,15	2,20	1,95	1,70	-	-	-	-	-	-	18
19	-	-	-	-	1,85	1,90	1,95	1,70	1,50	-	-	-	-	-	-	19
20	-	-	-	-	1,65	1,70	1,75	1,50	1,35	-	-	-	-	-	-	20
21	-	-	-	-	1,45	1,50	1,55	1,35	1,15	-	-	-	-	-	-	21
22	-	-	-	-	-	1,35	1,40	1,15	1,00	-	-	-	-	-	-	22
23	-	-	-	-	-	1,20	1,25	1,00	0,85	-	-	-	-	-	-	23
24	-	-	-	-	-	1,10	1,15	0,90	0,70	-	-	-	-	-	-	24
25	-	-	-	-	-	-	1,00	0,75	0,60	-	-	-	-	-	-	25
26	-	-	-	-	-	-	0,90	0,65	-	-	-	-	-	-	-	26
27	-	-	-	-	-	-	0,80	-	-	-	-	-	-	-	-	27
28	-	-	-	-	-	-	0,70	-	-	-	-	-	-	-	-	28

Lengths may vary depending on various telescoping sequences

HA

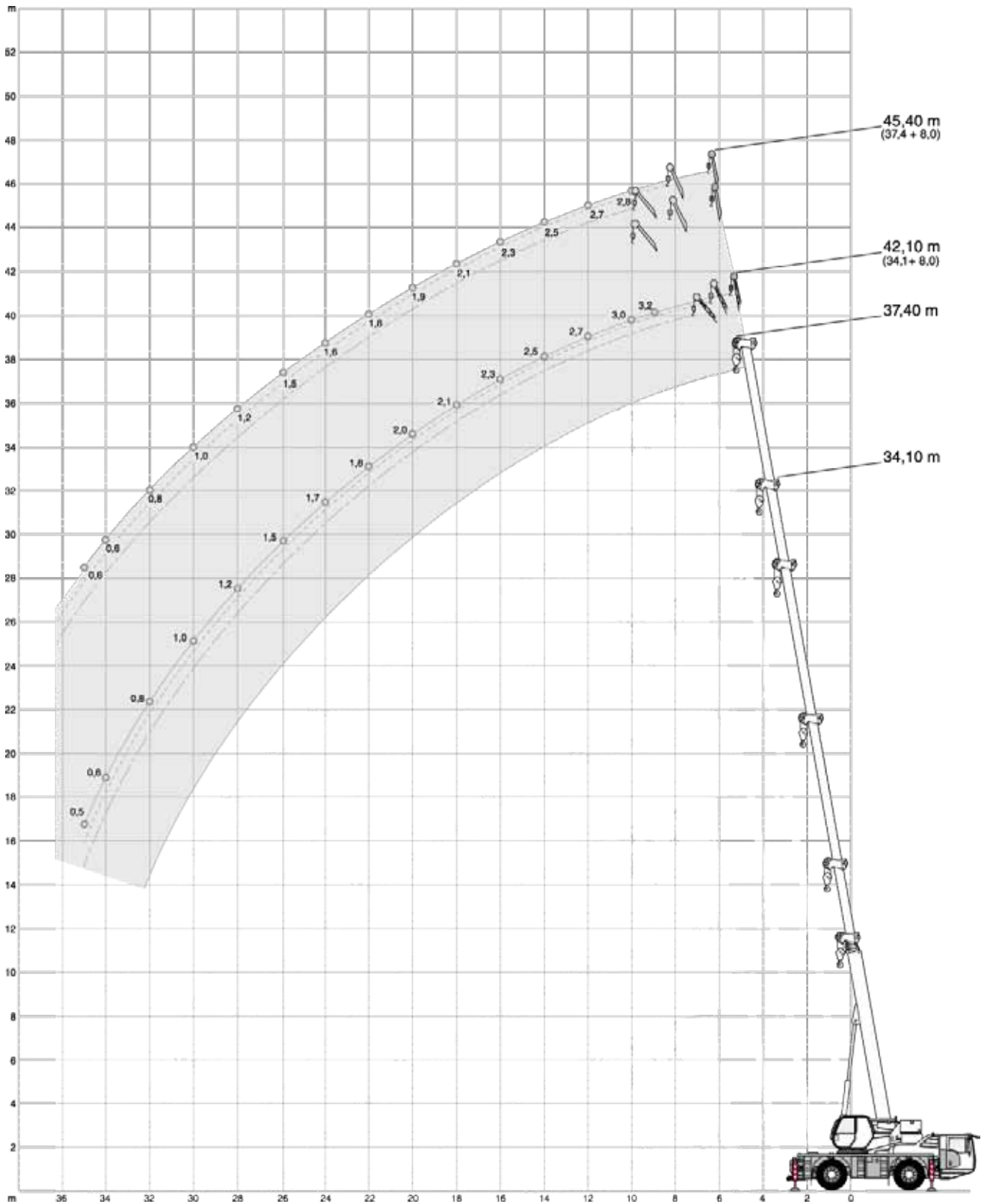
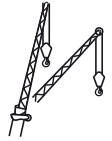
2,5 t		6,20 x 5,95 m										360°		ISO	
															
		9,50 ¹⁾	9,50	13,00	16,50	19,80	23,50	26,80	30,50	34,10	37,40				
m	t	t	t	t	t	t	t	t	t	t	t	m			
3	35,00	32,00	31,20	25,95	18,95	-	-	-	-	-	-	3			
3,5	27,45	27,45	27,45	23,70	18,35	18,40	-	-	-	-	-	3,5			
4	24,40	24,40	24,20	22,00	18,60	17,55	-	-	-	-	-	4			
4,5	21,80	21,80	21,60	20,00	17,95	16,25	14,45	-	-	-	-	4,5			
5	19,50	19,50	19,50	18,70	16,30	15,15	13,85	-	-	-	-	5			
6	15,50	15,50	15,50	14,80	14,00	12,10	11,70	10,00	-	-	-	6			
7	11,65	11,65	11,70	11,70	11,45	9,80	9,55	9,30	7,45	-	-	7			
8	-	-	9,50	9,50	9,50	8,75	8,00	7,80	7,45	5,55	-	8			
9	-	-	7,80	7,80	7,80	7,80	6,90	6,65	6,50	5,35	-	9			
10	-	-	6,50	6,50	6,50	6,50	6,40	5,75	5,65	5,00	-	10			
11	-	-	-	5,40	5,40	5,40	5,40	5,00	4,95	4,65	-	11			
12	-	-	-	4,80	4,80	4,80	4,80	4,35	4,35	4,30	-	12			
13	-	-	-	4,00	4,00	4,00	4,00	3,85	3,85	3,80	-	13			
14	-	-	-	3,40	3,40	3,40	3,40	3,40	3,40	3,40	-	14			
15	-	-	-	-	2,90	2,90	2,90	2,90	2,90	2,90	-	15			
16	-	-	-	-	2,70	2,70	2,70	2,70	2,70	2,70	-	16			
17	-	-	-	-	2,20	2,20	2,20	2,20	2,20	2,20	-	17			
18	-	-	-	-	-	2,00	2,00	2,00	2,00	2,00	-	18			
19	-	-	-	-	-	1,80	1,80	1,80	1,80	1,80	-	19			
20	-	-	-	-	-	1,70	1,70	1,70	1,70	1,70	-	20			
21	-	-	-	-	-	1,40	1,40	1,40	1,40	1,40	-	21			
22	-	-	-	-	-	-	1,30	1,30	1,30	1,30	-	22			
23	-	-	-	-	-	-	1,10	1,10	1,10	1,10	-	23			
24	-	-	-	-	-	-	1,00	1,00	1,00	1,00	-	24			
25	-	-	-	-	-	-	-	0,90	0,90	0,85	-	25			
26	-	-	-	-	-	-	-	0,80	0,80	0,75	-	26			
27	-	-	-	-	-	-	-	0,75	0,75	0,65	-	27			
28	-	-	-	-	-	-	-	0,70	0,70	-	-	28			
29	-	-	-	-	-	-	-	-	0,60	-	-	29			

2,5 t		6,20 m x 4,80 m										360°		0° / 360°				ISO	
																			
		9,50	13,00	16,50	19,80	23,50	26,80	30,50	34,10	37,40	9,50	13,00	16,50	9,50*	13,00*				
m	t	t	t	t	t	t	t	t	t	t	t	t	t	t	t	m			
3	28,90	28,90	25,95	18,95	-	-	-	-	-	-	9,95	10,75	11,25	6,60	7,45	3			
3,5	25,65	25,65	22,55	18,35	18,40	-	-	-	-	-	8,85	9,55	10,00	5,55	6,25	3,5			
4	22,95	20,85	19,55	17,30	16,05	-	-	-	-	-	7,90	8,55	8,95	4,70	5,35	4			
4,5	20,15	18,60	17,30	16,20	13,65	13,00	-	-	-	-	7,10	7,70	8,05	4,00	4,60	4,5			
5	16,85	15,80	14,85	14,05	11,80	11,35	-	-	-	-	6,10	6,65	7,00	3,45	4,00	5			
6	12,00	11,95	11,40	10,95	10,45	8,90	8,60	-	-	-	4,35	4,90	5,15	2,55	3,05	6			
7	8,90	9,40	9,15	8,85	8,50	8,10	7,00	6,80	-	-	3,20	3,70	3,95	1,90	2,35	7			
8	-	7,35	7,55	7,35	7,10	6,90	5,80	5,70	5,55	-	-	2,85	3,10	-	1,80	8			
9	-	5,95	6,20	6,20	6,05	5,90	4,90	5,20	4,75	-	-	2,20	2,45	-	1,40	9			
10	-	4,90	5,10	5,25	5,20	5,10	4,45	4,45	4,10	-	-	1,70	1,95	-	1,05	10			
11	-	-	4,30	4,45	4,55	4,45	4,05	3,90	3,55	-	-	-	1,50	-	-	11			
12	-	-	3,65	3,80	3,90	3,90	3,75	3,40	3,05	-	-	-	1,20	-	-	12			
13	-	-	3,15	3,25	3,35	3,45	3,40	3,00	2,65	-	-	-	-	-	-	13			
14	-	-	2,70	2,85	2,95	3,00	3,05	2,65	2,35	-	-	-	-	-	-	14			
15	-	-	-	2,45	2,55	2,65	2,70	2,35	2,05	-	-	-	-	-	-	15			
16	-	-	-	2,15	2,25	2,30	2,35	2,05	1,80	-	-	-	-	-	-	16			
17	-	-	-	1,90	2,00	2,05	2,10	1,85	1,55	-	-	-	-	-	-	17			
18	-	-	-	-	1,75	1,80	1,85	1,60	1,35	-	-	-	-	-	-	18			
19	-	-	-	-	1,55	1,60	1,65	1,40	1,15	-	-	-	-	-	-	19			
20	-	-	-	-	1,35	1,40	1,45	1,20	1,00	-	-	-	-	-	-	20			
21	-	-	-	-	1,20	1,25	1,30	1,05	0,85	-	-	-	-	-	-	21			
22	-	-	-	-	-	1,10	1,15	0,90	0,70	-	-	-	-	-	-	22			
23	-	-	-	-	-	0,95	1,00	0,75	0,60	-	-	-	-	-	-	23			
24	-	-	-	-	-	0,85	0,90	0,65	-	-	-	-	-	-	-	24			
25	-	-	-	-	-	-	0,75	-	-	-	-	-	-	-	-	25			
26	-	-	-	-	-	-	0,65	-	-	-	-	-	-	-	-	26			







1) over rear · nach hinten · sur l'arrière · sul retro · hacia atrás · para trás · сзади

Lengths may vary depending on various telescoping sequences



HAV





HAV

5,5 t		6,20 x 5,95 m		360°		ISO		
 34,10 m				 37,40 m				
		8,0 m					8,0 m	
		0°	20°	40°			0°	20°
m	t	t	t	m	t	t	t	
9,0	3,20	-	-	10,0	2,80	-	-	
10,0	3,00	-	-	11,0	2,70	-	-	
11,0	2,90	1,90	-	12,0	2,70	1,80	-	
12,0	2,70	1,80	-	13,0	2,60	1,75	-	
13,0	2,60	1,75	1,40	14,0	2,50	1,70	1,35	
14,0	2,45	1,70	1,35	15,0	2,35	1,65	1,35	
15,0	2,35	1,65	1,35	16,0	2,25	1,60	1,30	
16,0	2,25	1,60	1,30	17,0	2,15	1,60	1,30	
17,0	2,15	1,55	1,30	18,0	2,05	1,55	1,25	
18,0	2,10	1,55	1,25	19,0	1,95	1,50	1,25	
19,0	2,00	1,50	1,25	20,0	1,85	1,50	1,25	
20,0	1,95	1,45	1,25	21,0	1,80	1,45	1,25	
21,0	1,85	1,45	1,25	22,0	1,75	1,40	1,20	
22,0	1,80	1,40	1,20	23,0	1,65	1,40	1,20	
23,0	1,75	1,40	1,20	24,0	1,60	1,40	1,20	
24,0	1,70	1,35	1,20	25,0	1,50	1,35	1,20	
25,0	1,60	1,35	1,20	26,0	1,45	1,30	1,20	
26,0	1,45	1,30	1,20	27,0	1,30	1,30	1,20	
27,0	1,30	1,30	1,20	28,0	1,20	1,25	1,20	
28,0	1,15	1,25	1,20	29,0	1,05	1,20	1,15	
29,0	1,05	1,15	1,20	30,0	0,95	1,05	1,15	
30,0	0,95	1,05	1,10	31,0	0,85	0,95	1,00	
31,0	0,85	0,95	0,95	32,0	0,75	0,85	0,90	
32,0	0,75	0,85	0,85	33,0	0,70	0,75	0,80	
33,0	0,65	0,75	0,75	34,0	0,60	0,70	0,70	
34,0	0,60	0,65	0,65	35,0	0,55	0,60	0,60	
35,0	0,50	0,55	0,55	36,0	-	0,50	0,55	

HAV

3,8 t		6,20 x 5,95 m		360°		ISO	
 34,10 m				 37,40 m			
		8,0 m					
		0°	20°	40°			
m		t	t	t	m		t
9		3,20	-	-	9		-
10		3,00	-	-	10		2,80
11		2,90	1,90	-	11		2,70
12		2,70	1,80	-	12		2,70
13		2,60	1,75	1,40	13		2,60
14		2,45	1,70	1,35	14		2,50
15		2,35	1,65	1,35	15		2,35
16		2,25	1,60	1,30	16		2,25
17		2,15	1,55	1,30	17		2,15
18		2,10	1,55	1,25	18		2,05
19		2,00	1,50	1,25	19		1,95
20		1,95	1,45	1,25	20		1,85
21		1,85	1,45	1,25	21		1,80
22		1,75	1,40	1,20	22		1,75
23		1,60	1,40	1,20	23		1,60
24		1,40	1,35	1,20	24		1,45
25		1,25	1,35	1,20	25		1,30
26		1,15	1,25	1,20	26		1,15
27		1,00	1,15	1,20	27		1,05
28		0,90	1,00	1,05	28		0,90
29		0,80	0,90	0,95	29		0,80
30		0,70	0,80	0,85	30		0,70
31		0,60	0,70	0,75	31		0,60
32		0,50	0,60	0,60	32		0,55
33		-	0,50	0,55	33		-

2,5 t		6,20 x 5,95 m		360°		ISO	
 34,10 m				 37,40 m			
		8,0 m					
		0°	20°	40°			
m		t	t	t	m		t
9		3,20	-	-	9		-
10		3,00	-	-	10		2,80
11		2,90	1,90	-	11		2,70
12		2,70	1,80	-	12		2,70
13		2,60	1,75	1,40	13		2,60
14		2,45	1,70	1,35	14		2,50
15		2,35	1,65	1,35	15		2,35
16		2,25	1,60	1,30	16		2,25
17		2,15	1,55	1,30	17		2,15
18		2,10	1,55	1,25	18		2,05
19		2,00	1,50	1,25	19		1,95
20		1,85	1,45	1,25	20		1,85
21		1,65	1,45	1,25	21		1,70
22		1,50	1,40	1,20	22		1,50
23		1,30	1,40	1,20	23		1,35
24		1,15	1,30	1,20	24		1,20
25		1,05	1,15	1,20	25		1,05
26		0,90	1,05	1,10	26		0,90
27		0,80	0,90	1,00	27		0,80
28		0,70	0,80	0,85	28		0,70
29		0,60	0,70	0,75	29		0,60
30		-	0,60	0,65	30		0,50
31		-	-	0,55	31		-

NOTES TO LIFTING CAPACITY

Ratings are in compliance with ISO 4305.

Weight of hook blocks and slings is part of the load, and is to be deducted from the capacity ratings.

Consult operation manual for further details.

Note: Data published herein is intended as a guide only and shall not be construed to warrant applicability for lifting purposes. Crane operation is subject to the computer charts and operation manual both supplied with the crane.