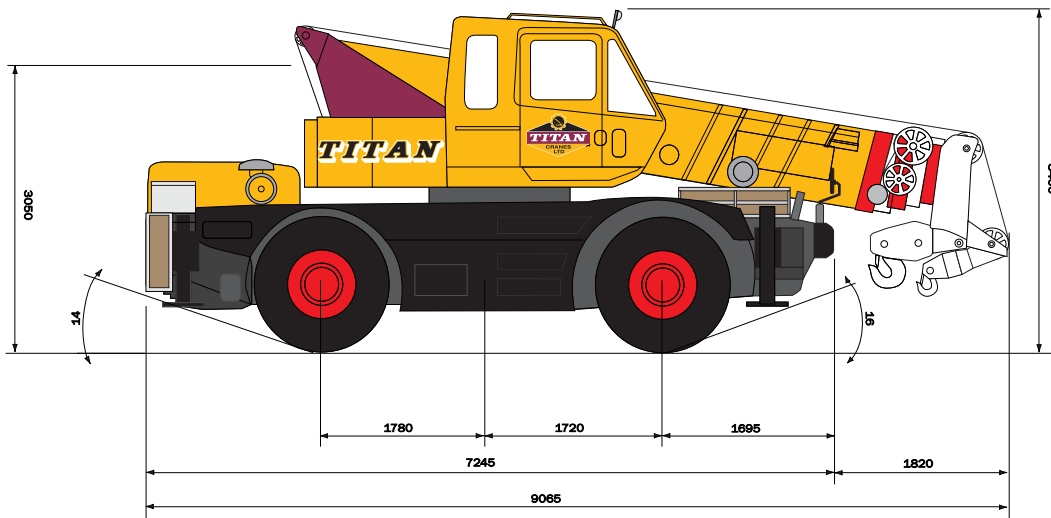
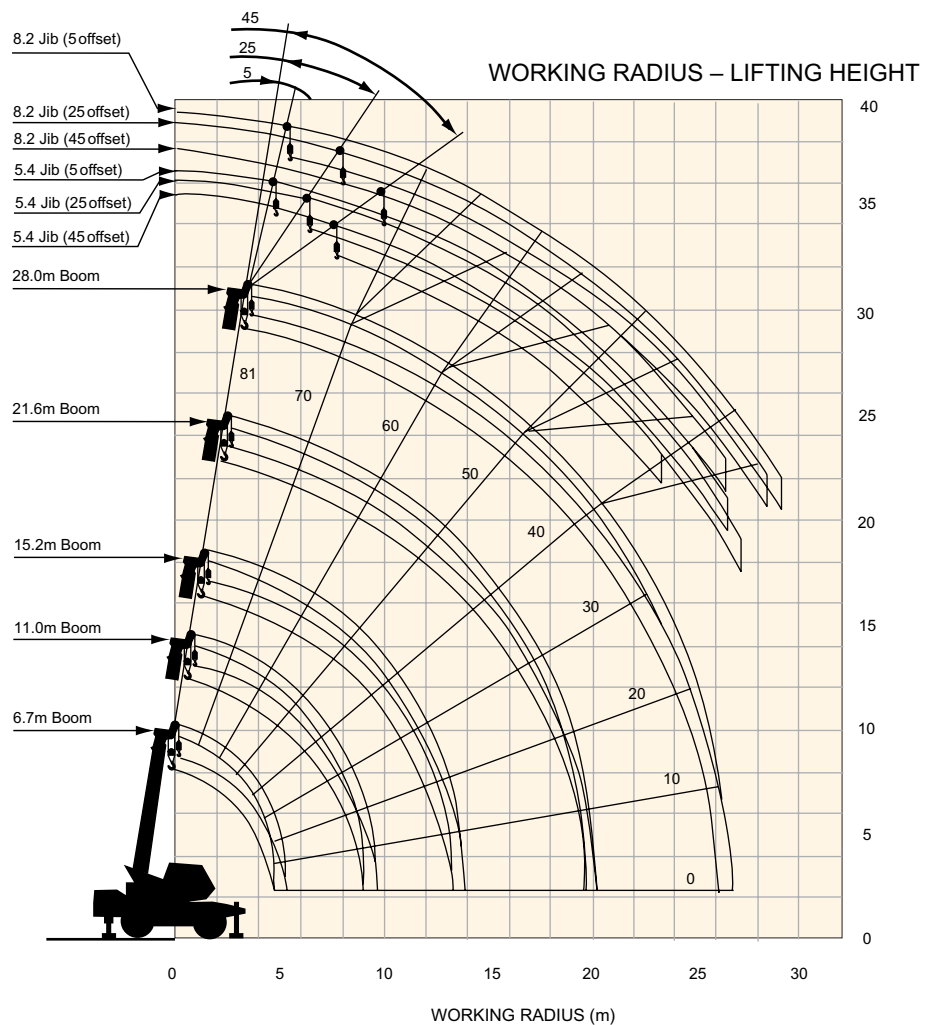
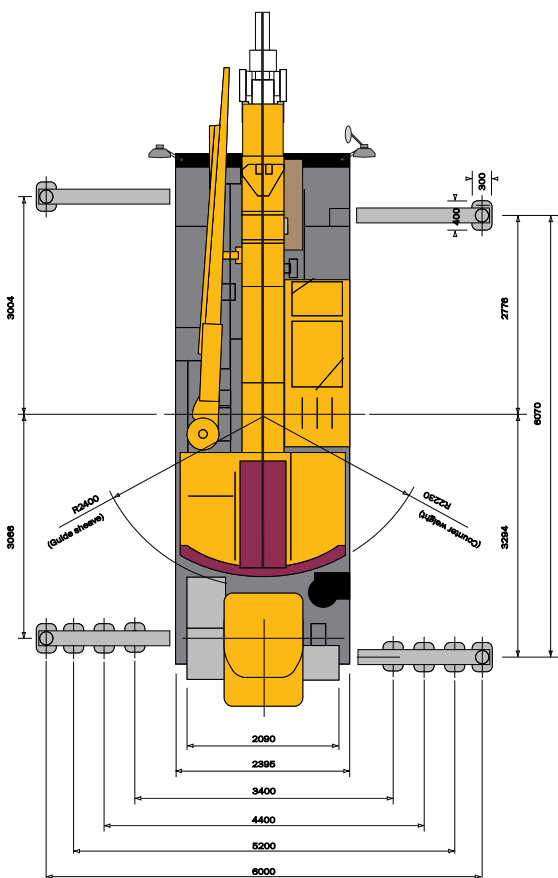


## 25 TONNE CITY CRANE



### GENERAL DIMENSIONS



### LOAD RATINGS IN TONNES

**360°**
**DIN 15019-2**
**Main boom**

Working Radius (m)	Outriggers Fully Extended (6.0m) - 360° Full Range					Outriggers Intermediately Extended (5.2m) - Over Side					Outriggers Intermediately Extended (4.4m) - Over Side				
	6.7m Boom	11.0m Boom	15.2m Boom	21.6m Boom	28.0m Boom	6.7m Boom	11.0m Boom	15.2m Boom	21.6m Boom	28.0m Boom	6.7m Boom	11.0m Boom	15.2m Boom	21.6m Boom	28.0m Boom
2.8	(25.00)	12.00	12.00	8.00		(25.00)	12.00	12.00	8.00		(25.00)	12.00	12.00	8.00	
3.0	22.00	12.00	12.00	8.00		22.00	12.00	12.00	8.00		22.00	12.00	12.00	8.00	
3.5	20.00	12.00	12.00	8.00		20.00	12.00	12.00	8.00		20.00	12.00	12.00	8.00	
4.0	17.00	12.00	12.00	8.00	6.50	17.00	12.00	12.00	8.00	6.50	17.00	12.00	12.00	8.00	6.50
4.5	15.00	12.00	12.00	8.00	6.50	15.00	12.00	12.00	8.00	6.50	15.00	12.00	12.00	8.00	6.50
5.0		12.00	12.00	8.00	6.50		12.00	12.00	8.00	6.50		12.00	12.00	8.00	6.50
5.5		12.00	12.00	8.00	6.50		12.00	12.00	8.00	6.50		10.20	10.15	8.00	6.50
6.0		12.00	11.50	8.00	6.50		12.00	11.50	8.00	6.50		8.80	8.75	8.00	6.50
6.5		11.30	10.60	8.00	6.50		10.25	10.05	8.00	6.50		7.50	7.45	8.00	6.50
7.0		10.70	9.90	7.85	6.50		8.85	8.80	7.85	6.50		6.50	6.45	7.05	6.50
8.0		8.95	8.60	7.10	5.90		6.75	6.70	7.10	5.90		5.00	4.90	5.55	5.90
9.0		7.05	7.00	6.35	5.35		5.35	5.30	5.90	5.35		3.90	3.80	4.45	4.80
10.0			5.65	5.70	4.80			4.25	4.90	4.80			3.00	3.60	3.95
11.0			4.60	5.10	4.30			3.45	4.05	4.30			2.40	3.00	3.30
12.0			3.85	4.50	3.85			2.80	3.40	3.75			1.80	2.45	2.80
13.0			3.15	3.80	3.50			2.25	2.90	3.20			1.35	2.05	2.35
14.0				3.30	3.20				2.45	2.75				1.65	2.00
15.0				2.85	2.90				2.10	2.40				1.35	1.70
16.0				2.45	2.65				1.75	2.10				1.05	1.40
17.0				2.10	2.45				1.45	1.80				0.80	1.15
18.0				1.80	2.15				1.15	1.55				0.60	0.95
19.0				1.55	1.85				0.95	1.30				0.40	0.75
20.0				1.40	1.60				0.85	1.10					0.55
21.0				[19.7m]	1.40				[19.7m]	0.90					0.40
22.0					1.20					0.75					
23.0					1.05					0.60					
24.0					0.90					0.45					
25.0					0.75										
26.0					0.65										
Critical Boom Angle	-	-	-	-	-	-	-	-	-	19°	-	-	-	-	35°
Standard Hook	25t Hook					25t Hook					25t Hook				
Hook Weight	200 kg					200 kg					200 kg				

	Outriggers Intermediately Extended (3.4m) - Over Side					Outriggers Fully Retracted (2.09m) - Over Side				
	6.7m Boom	11.0m Boom	15.2m Boom	21.6m Boom	28.0m Boom	6.7m Boom	11.0m Boom	15.2m Boom	21.6m Boom	28.0m Boom
2.8	(25.00)	12.00	12.00	8.00		10.65	10.45	9.85	8.00	
3.0	22.00	12.00	12.00	8.00		9.70	9.55	9.10	8.00	
3.5	16.50	12.00	12.00	8.00		7.30	7.20	7.15	7.10	
4.0	12.50	12.00	12.00	8.00	6.50	5.75	5.60	5.55	5.90	4.90
4.5	9.90	9.55	9.50	8.00	6.50	4.60	4.45	4.40	4.95	4.20
5.0		7.90	7.85	8.00	6.50		3.60	3.55	4.20	3.65
5.5		6.55	6.50	7.00	6.50		2.95	2.90	3.50	3.20
6.0		5.55	5.45	6.15	6.30		2.45	2.40	2.95	2.75
6.5		4.70	4.65	5.30	5.60		2.00	1.95	2.50	2.40
7.0		4.05	4.00	4.60	4.95		1.65	1.60	2.15	2.10
8.0		3.05	3.00	3.55	3.90		0.95	0.90	1.55	1.60
9.0		2.30	2.25	2.80	3.15					
10.0			1.65	2.25	2.55					
11.0			1.10	1.80	2.10					
12.0			0.70	1.40	1.70					
13.0				1.05	1.40					
14.0				0.70	1.10					
15.0				0.45	0.85					
16.0					0.60					
	-	-	20°	38°	49°	-	15°	50°	62°	69°
	25t Hook					25t Hook				
	200 kg					200 kg				